



## The Art of Grafting Two Companies

Last summer, after careful consideration on both sides, Hartney Greymont agreed to be acquired by the Davey Tree Expert Company of Ohio.

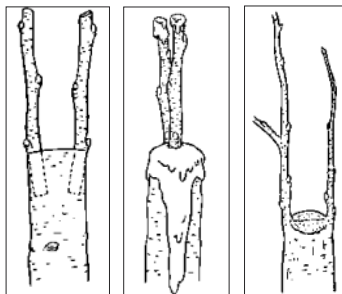
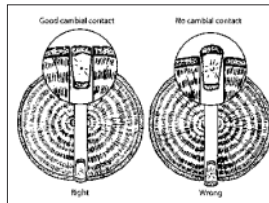
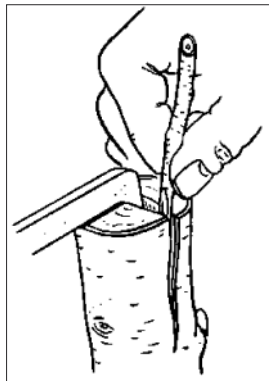
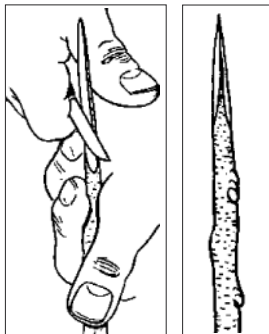
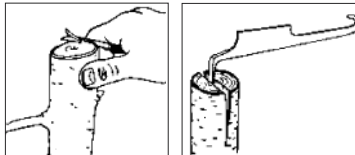
We have the same philosophy. Davey is equally committed to providing superior tree care through a scientific approach based on research.

Both companies believe in the continuous professional education of their arborists and lawn care technicians. To date, Hartney Greymont employees have attended—and taught at—Davey’s advanced professional training institute.

Both companies are stewards of the environment and share their expertise freely in projects related to reforestation, the eradication of dangerous parasites, and other worthwhile endeavors.

Davey and Hartney Greymont put client service first. It’s the keystone of both operations and informs everything we do and aspire to be.

Yep, there have been some slip-ups. Combining the Davey office in Norwood with the HG office in Needham and incorporating HG’s operations and management systems with Davey’s generated a few glitches. Most have been related to things such as sending out invoices under the wrong letterhead. We sincerely regret the confusion and aggravation this has caused. We believe we’re close to getting the last bugs out.



DRAWINGS: UNIVERSITY OF MISSOURI EXTENSION

HG’s Scott McPhee put it this way: “It’s easier to dig up, bundle and relocate a 55-foot elm tree than merge two different billing systems.”

Even so, the grafting of Hartney Greymont and Davey is coming along well—in large part through the patience of our clients and the great efforts of our people.

“Thank you, all.” 🍀



## Are the Winter Moths Winning?

“Due to lower levels of infestation in some areas in 2010, we thought the winter moth population was down,” says HG’s Scott McPhee, “but this year they have come back stronger than ever.”

It’s not really clear why. It could have been the late fall and early spring weather. Some neighborhoods were untouched, others virtually defoliated.

According to McPhee, “Many homeowners thought they would be protected with just one application of the control agent. But the moth population was so large, that they still sustained considerable defoliation.”

In fact, Hartney Greymont believes we could see even heavier infestations in 2012. What we recommend is scheduling two ap-

plications for next spring. Making the appointments in advance will guarantee that a crew will be available to treat your property twice during the period when treatments will help.

“If you’re unsure whether you are at risk, look for triangular moths flying around your porch light or lamp post this fall,” says McPhee. “If there are a lot of them, that’s a bad sign. You can also examine the leaves on your trees. If the foliage looks thin, has holes in it, or contains leaves that are of a lighter green or bronze color that could be an indicator that the tree has refoliated after a winter moth attack.”

As always, if you have any questions, just call Hartney Greymont at 781-444-1227. 🌿

## You, the Indoor Arborist

In past *leaflets* and on our blog, *Nuts about Trees*, we’ve discussed bonsais and orchards. In this edition, we’re going to combine those themes and tell you how to create your own orchard indoors.

The first step is to select one or more of the many dwarf varieties of orange, lemon, papaya, lime, grapefruit, banana, pineapple, kumquat and pomegranate trees available. They aren’t expensive. Look for well-established specimens two or three years old.

Almost any kind of container will work as long as it enables adequate drainage. Use a potting soil that includes vermiculite and be sure it’s loosely packed, again, to keep water from pooling.

Lots of sunlight daily is vital. Place your tree so that it can enjoy a southern exposure and get as much light as it needs. Depending on the variety, that can range from six to twelve hours a day. Supplementing what nature supplies with a work light may be necessary. During the summer, you can move your tree outside, but do it gradually.

About every four weeks, nourish the tree with a water-soluble fertilizer. Pruning will be required to allow sunlight to penetrate the interior of the tree, as well as to encourage strong branches that can bear the weight of the fruit. Spritzing the tree with horticultural oil or organic soap spray will keep moths, aphids and spider mites at bay.



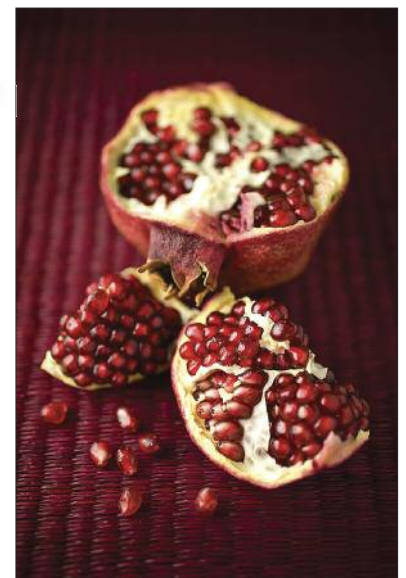
Speaking of insects, with no bees in the picture, pollination becomes your responsibility. If you want fruit, you should take a paint brush and dab pollen on the flowers’ stamens. When fruit clusters appear, clip off all but one fruit. This will go a long way toward making each crop successful.

Finally, pay attention to moisture. Let the topmost soil get dry before watering. And mist the tree’s leaves frequently. Adequate humidity is important, too.

Trees need it to thrive.

Fresh fruit, fragrant flowers and the satisfaction of having raised them yourself. There’s a lot to be said for the life of an arborist. 🌿

*The pomegranate has become popular in culinary circles*



# The New Olmsted

Looking at a skinny maple tree staked miserably beside a traffic-clogged street, it's easy to believe that cities and nature are simply incompatible.

But some people refuse to accept that, and have been willing to undertake extraordinary, logic-defying projects to keep nature in the urban picture.

The Back Bay Fens and Boston's Emerald Necklace were created at a time when open land in other cities was disappearing under an avalanche of concrete, factories, tenements and elevated railroads. It's amazing that Gilded Age politicians would approve Olmsted's plan to restore a polluted bog to its original state—a salt marsh—in the middle of Boston. Or agree to finance his vision of continuous parks connected by waterways.

It's even more surprising that these parks still exist today—but they do, supported by organizations such as the Emerald Necklace Conservancy. It's always been an uphill battle; commitment to urban greenspaces has fallen off for decades at a time. But there's now a strong public/private partnership dedicated to maintaining the environment that preceded the city as a living part of the city.

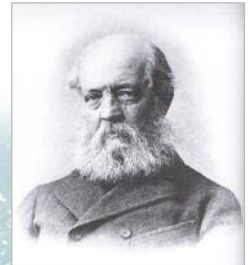
In fact, \$60 million has been spent in the last ten years restoring the Emerald Necklace. Further millions will be invested in repairing the channel of the Muddy River that winds through the Necklace and clearing the invasive Phragmite reeds that are choking it off.

Brooklyn and Louisville, Kentucky are two other cities with Olmsted-designed parklands—and organizations devoted to their preservation. These are the Prospect Park Alliance and the Louisville Olmsted Parks Conservancy. Both have proven exceptionally effective at mobilizing public support.

As arborists, we're the first to admit that the mainstay of a vital green presence in urban areas is the ordinary citizen who, as an organizer, volunteer, fundraiser, and donor, makes it all possible. And always will.

If you would like to support any of the organizations mentioned above, we urge you to do so. 🍀

**Frederick Law Olmsted**



**The James P. Kelleher  
Rose Garden**



**The Arnold  
Arboretum**

**Iroquois Park, Louisville, Kentucky**



PHOTOGRAPH: TED WATHEN

**Shawnee Park, Louisville, Kentucky**

THREE PHOTOGRAPHS ABOVE OF ARNOLD ARBORETUM AND FENS: © SEYMOUR LEVY  
TWO PHOTOGRAPHS ON RIGHT: COURTESY OF LOUISVILLE OLMSTED PARKS CONSERVANCY



# Ask Hartney Greymont

**Q: Can trees talk to each other?**

**A:** There's evidence that trees can *communicate* with each other. Researchers at the University of Washington established two lots of willow trees and introduced caterpillars into one of them. In time, those trees began to deploy *proanthocyanidin*, a naturally occurring insect repellent. Several weeks later, the uninfected trees did too -- even though they were up to 100 yards distant. Why?

The first hypothesis was that the affected trees had alerted the others via their roots or through the soil. But the actual mode of communication was pheromones, specifically, hydrocarbon ethylene. It was being emitted by affected leaves and moving through the air into the uninfected lot. Warned by this chemical signal, those willows began to exude compounds to inhibit the growth of insect larvae, even though there were no caterpillars present.

Given the interconnectedness of life, it shouldn't be hard to accept the possibility that trees can communicate with each other in a variety of ways, most of which we still don't understand.



**Q. Exactly how do trees grow?**

**A:** Probably not the way you think they do. Most people believe trees grow from the ground up. And that they draw all their nourishment from the soil.

As a matter of fact, trees grow almost entirely from the tips of their branches, and in diameter. Even over 500 years, a branch scarcely moves higher.

A tree's specialized growth zones are called apical meristems, and they are also found at the tips of the roots and, of course, in

their buds. Diameter growth comes from the vascular cambium, a lateral meristem located between the bark and wood. The cambium produces new xylem on its interior side which becomes wood and new phloem on its exterior side which becomes bark.

Regarding "diet", trees are not passive feeders. Although they do draw water and minerals from the soil, that's only about 20% of the story. The real action takes place in the canopy, where, in a series of processes, the leaves take in carbon dioxide and their green chlorophyll extracts energy from sunlight in the form of photons.



**EXPERIENCE OUR GUARANTEE**

If you are not satisfied with any treatment or completed job, let us know. We will resolve the situation to your satisfaction, no questions asked. Our goal is not only to make sure your trees, shrubs, and lawn are as healthy as possible, but also to provide you with the peace of mind a satisfaction guarantee can bring.

The synthesis of these raw materials and solar power yields sugars that the tree then converts into biochemical fuel. Oxygen is a by-product, which is why rainforests are known as the "lungs of the world." 🌿



A division of The Davey Tree Expert Company

**Hartney Greymont**  
433 Chestnut Street  
Needham, MA 02492  
781.444.1227  
www.hartney.com  
trees@hartney.com

Concord    Needham

**HARTNEY GREYMONT SERVICES**

- Insect and Disease Control
- WaterSmart Irrigation
- ArborTrack®
- Tree Pruning
- Shrub Pruning
- Lawncare
- Landscape Design & Construction

