



Why Winter

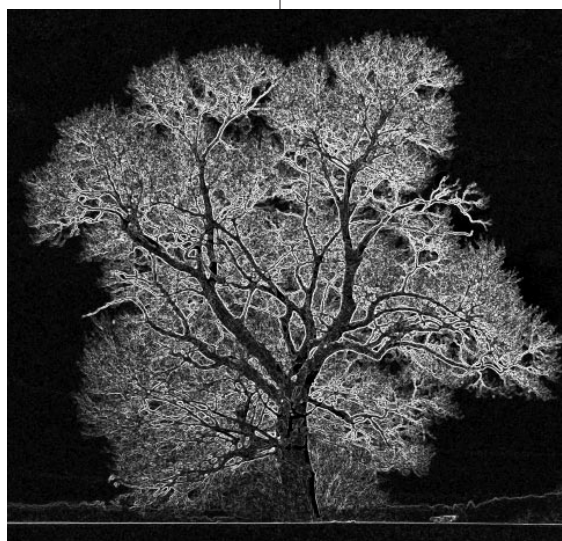
In New England, winter is the preferred time for pruning most shade and ornamental trees. There are valuable benefits provided by performing many tree care operations during a tree's dormancy.

A tree's form is visible without obstruction throughout the dormant season. While foliage is absent, the branch structure is more apparent and easier to inspect, similar to an x-ray of the human skeleton. This bare framework allows our arborists to more quickly evaluate structural integrity and identify any needed modification. If corrective action is required, clean up is reduced by removing only limbs—not heavy foliage—saving time and money.

Further, dormant pruning is a stimulating process. Trees respond to dormant care with consistent growth. Pruning wounds often close faster made in winter than those made during the summer months. Also, there is a reduced disease and insect presence during this biologically quiet season.

Additionally, by taking advantage of firm ground, while flowers and perennials are dormant, work can proceed

more efficiently—saving both time and money. Large tree pruning and removals are accomplished during the winter because of increased access for equipment. Frozen ground and snow cover provides great opportunities to work over lawns and other areas that may be damaged during other times of the year.



Like an x-ray, branch structure is more apparent without foliage

Lastly, not to be overlooked is our unique team of arborists and field crews. Year round employment is a requisite for all of us. Mortgages, tuition payments, and auto loans all fail to recognize nature's seasonality. Accordingly, Hartney Greymont provides work throughout all seasons for our talented employees. In reality, this commitment to our staff allows us to assemble and retain the professional crews that skillfully and consistently tend to your property. You can help keep

this resource available by allowing us to schedule your work throughout the year.

Caring for the health and safety of your landscape during the winter provides you decided benefit and value. Thanks for letting us be of service all seasons of the year. 🍁

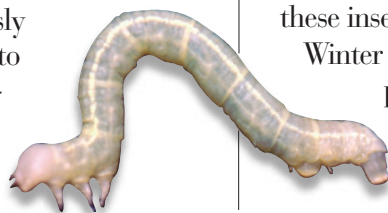
Winter Moth Quick Facts

Many local trees have been weakened by winter moth caterpillars. Winter moth populations will continue to increase for the next several years, spreading to previously unaffected areas. We expect the impact to unprotected trees to be severe and widespread in 2006.

Proactive treatments are required to effectively manage this insect and

prevent damaging early season defoliation. Preventative treatments demand precise timing for maximum effectiveness; a limited window exists in early spring when these insects are most vulnerable.

Winter moth larvae feed on a wide variety of deciduous plants, trees and shrubs including: oak, maple, cherry, crabapple, blueberry and azalea. Once



Winter moth larvae

continued on page 2

continued from page 1

Winter Moth Quick Facts


hatched, the green caterpillars voraciously feed in or on leaf and flower buds until mid-June.

Hartney Greymont is managing winter moth through a new class of pesticides, combining the efficacy of synthetic materials with the benefits of biological controls. These products, derived from naturally occurring organisms, provide effective control of targeted insects while alleviating concerns about chemical applications and the environment.

This damaging pest is best treated before buds and leaves open. A very limited window exists for effectively controlling this pest; a biological fact that is beyond our control! We want to be in the best position for planning, scheduling and implementing the necessary actions against this insect, before your landscape is damaged.




Male adult moth

For more information or to develop a care program to help protect your important trees and shrubs, speak with your arborist. 

hartney.com

If you have not visited our website recently, we cordially invite you to do so. Hartney.com has been completely redesigned, offering more educational information, as well as, highlighting our capabilities and services. We are very excited about our new look and hope this format provides better resources to assist those making decisions concerning their landscape. We are proud of the improvements and contributions from our employees in its redevelopment.

Additionally, current and past issues of the *leaflet* will now be available on the site. If you would like to receive the *leaflet* or other news bulletins, you will be able to register your email address with us. Be assured we value your privacy and your email address will never be given out, only used by us for periodic and timely messages. We look forward to your visit and please let us know what you think. 

GUARANTEE OF SATISFACTION

If you are not satisfied with any treatment or completed job, let us know. We will resolve the situation to your satisfaction; no questions about it. Our goal is to not only make sure your trees, shrubs, and lawn are as healthy as possible, but also to provide you with the peace of mind a satisfaction guarantee can bring.

Did You Know?

Hartney Greymont provides:

TREE AND SHRUB CARE SERVICES

- Shade Tree, Ornamental & Shrub Pruning
- Cabling & Bracing
- Tree & Shrub Fertilization
- Insect & Disease Diagnosis
- I.P.M. & Plant Health Care Programs

LANDSCAPE SERVICES

- Design
- Installation & Construction
- Large Tree Transplanting

LAWN CARE SERVICES

- Fertilization, Weed, Insect & Disease Control Programs
- I.P.M. Lawn Health Care Program
- Seed & Sod Installations
- Over-Seeding, Aeration & Dethatching
- Organic Treatment Programs



Hartney Greymont, Inc.

433 Chestnut Street
Needham, MA 02492
781.444.1227
www.hartney.com
trees@hartney.com



ANDOVER CONCORD NEEDHAM